

Tuya ZigBee Remote User Guide

Attention! (Troubleshooting!)

1. Please make sure your ZigBee Hub can access the Internet normally before pairing (add subdevice).
2. Our ZigBee Device can't work with other ZigBee Hubs, so please make sure your ZigBee Hub/Gateway is from Tuya.
3. Add Tuya ZigBee Hub in Smart Life APP according to the user guide of the ZigBee Hub.

- 1/EN英语 -

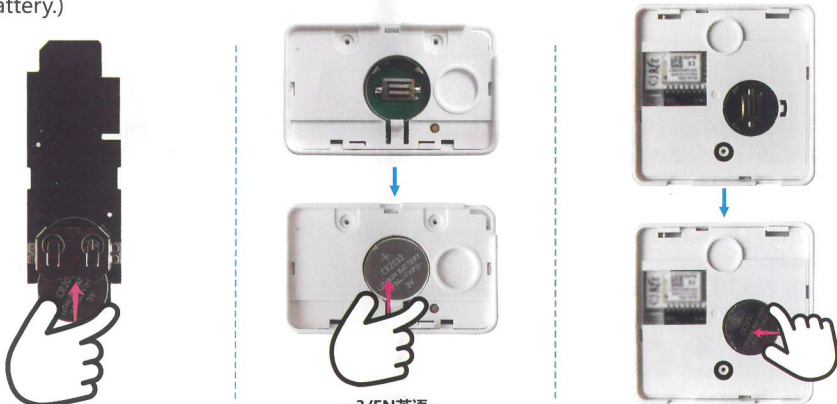
- Installation

1. Open the shell of the remote with the screwdriver in the box.



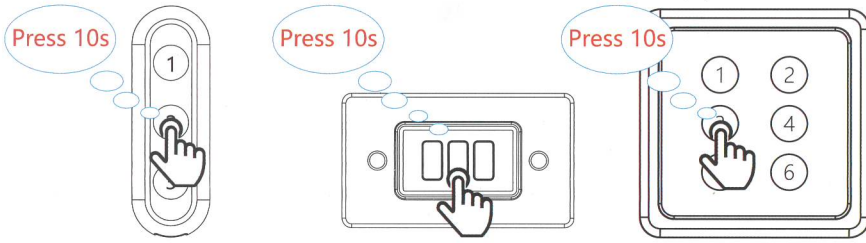
- 2/EN英语 -

2. Install the CR2032 coin battery as the picture. (You can skip this step if you buy the kit with battery.)

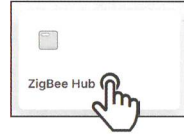


- 3/EN英语 -

3. Press any button for 10 seconds until the yellow indicator light flashes, then release the pairing button.



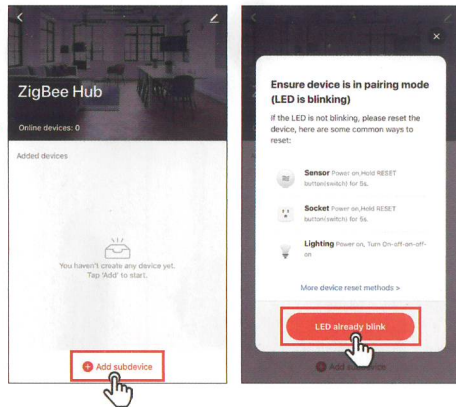
4. Click ZigBee Hub in Smart Life APP.



- 4/EN英语 -

Note: Due to the upgrade and update of Smart Life App, the actual operations may be slightly different from the below description, please follow the current instructions in Smart Life App.

5. Click Add subdevice button and LED already blink button in the App.



6. The ZigBee device will be added successfully.

- 5/EN英语 -

Specification	
ZigBee Frequency	2.4GHz
ZigBee Standard	IEEE 802.15.4
Radio Type	ZigBee 3.0
Max RF Power Transmitted	10 dBm

Model No: SS6100ZB, SS6200ZB, SS600ZB, SS6400ZB, SS7100ZB, SS7200ZB, SS7300ZB, SS9100ZB-YA, SS9200ZB-YA, SS9300ZB-YA, SS9400ZB-YA, SS9600ZB

Email: support@loratap.com

Manufacturer:

Shenzhen QianChuan Smart Technology Co., Ltd.

Address:

Floor 6, No.10 South 2nd lane, Jiafu Road, Baihao Village, Houjie Town, Dongguan City, Guangdong, China



Made in China

- 6/EN英语 -